

SR-10 RS-232 or USB Analog Resistive Touch Screen Controller Board

GUNZE
USA

Off-the-shelf solutions that offer high performance, low cost decoding.

An ideal choice for applications that require a simple and versatile interface solution. The SR-10 touch screen controller is designed to provide high performance, low cost decoding for all of our 4- and 8-wire analog resistive touch screens.

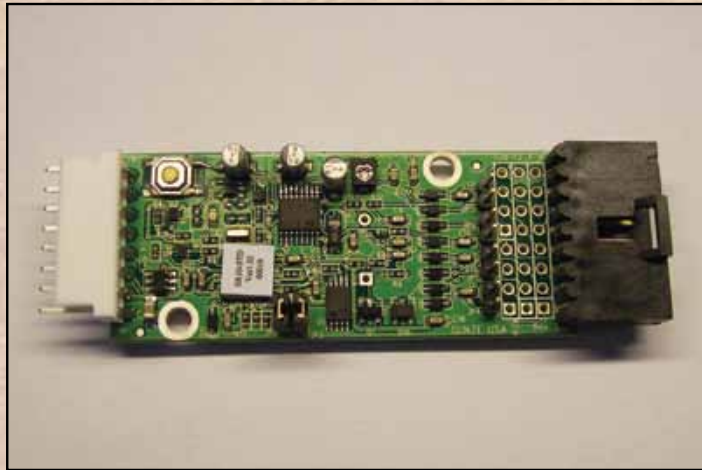
Benefits of SR-10 Controller Boards

- High performance, low cost decoding
- Supports RS232 and USB communications
- Supports a wide variety of FPC connections

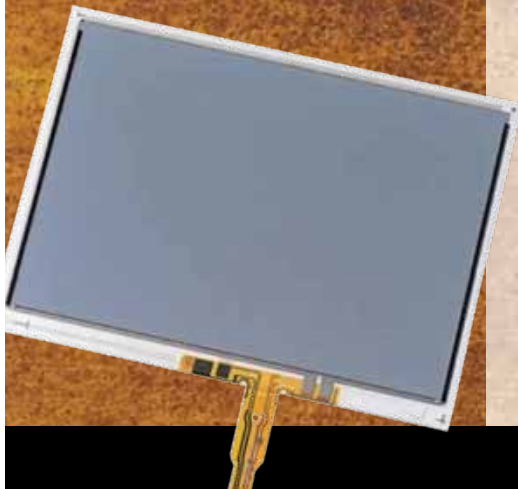
The SR-10 touch screen controller board is designed to provide high performance, low cost decoding for our 4 and 8-wire analog resistive touch screens.

This controller board is based on our popular AHL-120N8 Analog Resistive Touch Panel controller IC. The Gunze SR-10 will perform exceptionally well in handling stylus and finger inputs and uses firmware filtering to help reduce errors associated with light touches or unwanted electrical noise.

The SR-10 supports a wide variety of touch panel tail configurations, thus eliminating the need for any jumpers between the controller and the touch panel. The SR-10 is RoHS compliant. Our US-based driver support for the SR-10 helps to simplify controller and touch panel integration into most systems while also supporting dual monitor/touch panel requirements.



SR-10 shown with 8-position, .100" rt. angle AMP connector



The premier source for analog resistive touch panels.

Learn more about other Gunze USA touch panel solutions

Along with touch controller boards and chips, Gunze USA provides film-glass, tough, and LCD integrated touch panels. Configurations in 4-wire, 5-wire and 8-wire are available in custom designs, as well as in a range of cost-effective standard models. To learn more about Gunze USA touch panel solutions, call 512-990-3400 or visit www.gunzeusa.com

About Gunze USA

Gunze is one of the world leaders in resistive touch panel manufacturing. Gunze USA is a division of Gunze Limited, Japan, a multibillion-dollar company and the largest manufacturer of resistive touch panels in the world, employing over 8,000 people who work together to achieve international leadership through innovation.

Gunze USA works with OEMs and system integrators to design both standard and custom touch panel solutions. In addition, the company manufactures a wide variety of standard panels and total interface solutions for consumer electronics, industrial, automotive, medical, mobile, and POS/retail kiosk applications.

Electrical Specifications:

Touch Screens:	Detects analog resistive 4 and 8-wire
Resolution:	10-bit (electrical)
Driver Support:	Windows™ XP, Vista & WIN 7
Input Current (typ)	
4 and 8 wire, RS-232:	NoTouch/Touch: 30/40 mA Peak
4 and 8 wire USB:	NoTouch/Touch: 25/35 mA Peak
Buzzer Support:	On Board (optional)
Communications:	RS-232 or USB communication
PWB Size:	2.11" x .96". Overall dimension will vary based on connector options
Connector Types	
Touch Screen Side:	4 or 8-position, .100" rt. angle Amp: 103635-X 8 position flat flex LIF-1mm and 1.25mm 4 position flat flex LIF-1mm Custom connectors available per request.
Com Side:	8-pos, .100" rt. angle, friction lock Amp: 640457-8
Clock Frequency:	20 MHz
Sample Rate:	RS-232 87 pts/sec, USB 100pts/sec.
Baud Rate:	9600 default, other speeds user configurable
Data Output:	See chip spec, section 9-RS-232, section 10-USB
Power:	5.0 Vdc +/- 0.25 or from USB port
Environmental:	Storage: -40 °C – 85 °C, Operating: 0 °C – 70 °C
Static Protection:	±15 kV

